

Алматы (7273)495-231  
Ангарск (3955)60-70-56  
Архангельск (8182)63-90-72  
Астрахань (8512)99-46-04  
Барнаул (3852)73-04-60  
Белгород (4722)40-23-64  
Благовещенск (4162)22-76-07  
Брянск (4832)59-03-52  
Владивосток (423)249-28-31  
Владикавказ (8672)28-90-48  
Владимир (4922) 49-43-18  
Волгоград (844)278-03-48  
Вологда (8172)26-41-59  
Воронеж (473)204-51-73  
Екатеринбург (343)384-55-89

Ижевск (3412)26-03-58  
Иваново (4932)77-34-06  
Иркутск (395)279-98-46  
Казань (843)206-01-48  
Калининград (4012)72-03-81  
Калуга (4842)92-23-67  
Кемерово (3842)65-04-62  
Киров (8332)68-02-04  
Коломна (4966)23-41-49  
Кострома (4942)77-07-48  
Краснодар (861)203-40-90  
Красноярск (391)204-63-61  
Курск (4712)77-13-04  
Курган (3522)50-90-47  
Липецк (4742)52-20-81

Киргизия (996)312-96-26-47

Магнитогорск (3519)55-03-13  
Москва (495)268-04-70  
Мурманск (8152)59-64-93  
Набережные Челны (8552)20-53-41  
Нижний Новгород (831)429-08-12  
Новокузнецк (3843)20-46-81  
Ноябрьск (3496)41-32-12  
Новосибирск (383)227-86-73  
Ноябрьск (3496)41-32-12  
Омск (3812)21-46-40  
Орел (4862)44-53-42  
Оренбург (3532)37-68-04  
Пенза (8412)22-31-16  
Петрозаводск (8142)55-98-37  
Псков (8112)59-10-37

Россия (495)268-04-70

Пермь (342)205-81-47  
Ростов-на-Дону (863)308-18-15  
Рязань (4912)46-61-64  
Самара (846)206-03-16  
Саранск (8342)22-96-24  
Санкт-Петербург (812)309-46-40  
Саратов (845)249-38-78  
Севастополь (8692)22-31-93  
Симферополь (3652)67-13-56  
Смоленск (4812)29-41-54  
Сочи (862)225-72-31  
Ставрополь (8652)20-65-13  
Сыктывкар (8212)25-95-17  
Сургут (3462)77-98-35  
Тамбов (4752)50-40-97

Казахстан (772)734-952-31

Тверь (4822)63-31-35  
Тольятти (8482)63-91-07  
Томск (3822)98-41-53  
Тула (4872)33-79-87  
Тюмень (3452)66-21-18  
Улан-Удэ (3012)59-97-51  
Ульяновск (8422)24-23-59  
Уфа (347)229-48-12  
Хабаровск (4212)92-98-04  
Чебоксары (8352)28-53-07  
Челябинск (351)202-03-61  
Череповец (8202)49-02-64  
Чита (3022)38-34-83  
Якутск (4112)23-90-97  
Ярославль (4852)69-52-93

<https://samsungmedison.nt-rt.ru> || [soe@nt-rt.ru](mailto:soe@nt-rt.ru)

## Система цифровой рентгенографии GR40CW



Upgrading CR system to an advanced DR system

Reduce your workflow steps, cost and time with Samsung GR40CW

# Enhanced Workflow

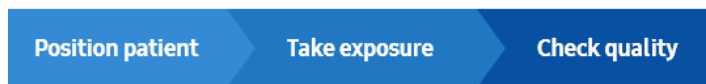
## 3-step Workflow

GR40CW allows users to simplify their daily routines. With GR40CW, workflow is three times faster than with CR systems and GR40CW is the same size as film/CR cassettes, allowing you to upgrade your old equipment to DR system without unnecessary hassle. Auto Exposure Detection (AED) recognizes exposure timing automatically without a cable connection between the X-ray generator and detector, thus enabling simple installation. By reducing workflow steps, it reduces cost and time while increases productivity.

## CR system



## DR system



## Fast Preview\*

Preview and acquisition take less than 2 seconds, and full acquisition less than 7 seconds. It is easy to shoot multiple images after checking the preview image.

\* Image acquisition time may vary according to the imageprocessing parameters and detectors.

\* Fast preview time using AccE Detector (S4343-AW, S4335-AW, S4335-AWV)



## Conventional Diagnostic Use

Manual Sititching\* can capture a body part that is larger than detector's area. So, viewing a larger area of the body is more convenient by capturing multiple images\*\*.

\* Option

\*\* Two to five images available.



## Intuitive User Interface

The workstation's intuitive interface enables users to easily operate the system. Anatomical Programmed Radiography (APR) selects the appropriate imaging method for the areas being imaged to help ensure quick examinations.



## ***Mirror View\****

Mirror View function provides secured screen sharing of GR40CW to the display device using Wi-Fi CERTIFIED Miracast™. This can help make a correct and quick decision on the x-ray image seamlessly, especially useful for the ER/OR or trauma environments, where multiple medical staff need to quickly acquire and check images in real-time. Therefore, Mirror View can reduce first aid response time and the risk of contamination in the OR room with ease of use.

\* Option

\* Compatible with Windows 10 only.

\* Miracast receiver dongle is necessary.

\* The images were taken with GM85.

\* When using the Mirror View, image transmitted via Miracast is not available for the purpose of diagnosis.



# **Diagnostic Confidence**

## **Low Dose in New S-View™**

S-View™ not only provides better image quality, but also secures better patient safety in radiography examinations. This can help change the patient's

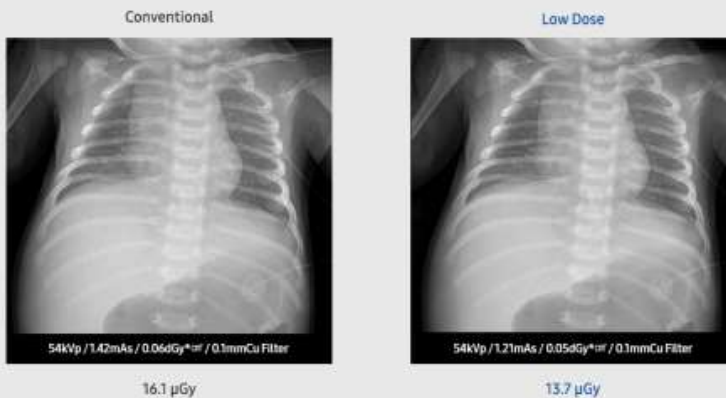
perspectives for X-ray radiation and improve patient satisfaction. The dose level can be reduced up to 45% dose reduction for pediatric abdomen, 15.5% for pediatric chest, and 27% for pediatric skull exams with the new S-Vue™ engine.\*

[LEARN MORE FOR LOW DOSE](#) [LEARN MORE FOR S-VUE™](#)

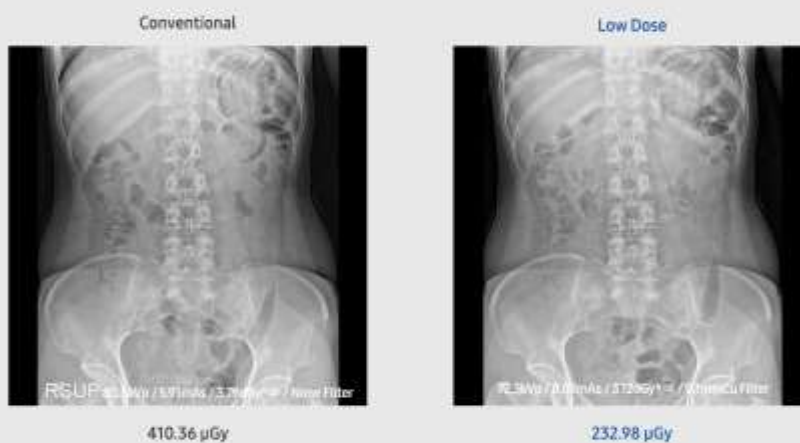
Case 3. Adult Chest PA



Case 1. Pediatric Chest PA



Case 2. Adult Abdomen



### Case 3. Adult Chest PA



### Case1. Pediatric Chest PA



\* Note : The claim concerning Samsung DR is based on limited phantom and clinical study results. Only routine PA chest radiography and abdominal radiography for average adults and pediatric abdominal, chest, skull radiography were studied, excluding pediatric patients under 1 month old. (FDA cleared - K172229, K182183) In practice, the values of dose reduction may vary accordingly. These clinical images calculate the dose reduction rate from its own standard dose at the clinical site, unlike our FDA claim which compares dose between new IPE and old IPE. The clinical site is responsible for determining whether the particular radiographic imaging needs are not impacted by such x-ray dose reduction.

\*\* Case 1 image was taken with GM85. / Case 2,3 images were taken with GC85A.

\*\*\* These are clinical dose reduction cases and rates may vary by the exposure condition of hospitals.

## Bone Suppression\*

Without additional setting or exposure, Bone Suppression Imaging improves the clarity of soft tissues by suppressing the appearance of bones in chest images, which improves your ability to detect nodules. You can easily create the companion image with just a click on the screen.

\* Option, these Images were taken with GC85A.



\* These Images were taken with SCBPA.

## **SimGrid™ \***

With just a click, SimGrid™ allows you to provide better patient care with higher satisfaction and reduced retake rates without the use of a portable grid, It improves image contrast by reducing scatter radiation effects and creates better image quality.

\* Option, these Images were taken with GM85.



\* These Images were taken with GM85.

## **S-Enhance\***

To support your diagnosis, S-Enhance improves the clarity of foreign bodies (e.g. tube, line and/or needle) in images of chest, abdomen, and L-spine. With a single on-screen click, the companion image is created without additional settings or x-ray exposure, streamlining the workflow.

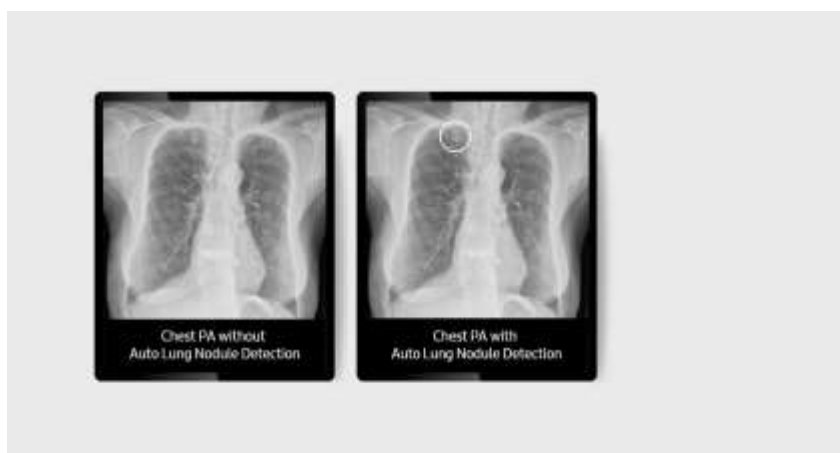
\* Option, these Images were taken with GM85.



\* These Images were taken with GM85.

## **Auto Lung Nodule Detection\* \*\***

Our first computer-aided detection solution helps boosting healthcare professionals to focus on their clinical needs. Multiple deep learning algorithms crafted for Auto Lung Nodule Detection help predict lung nodule in general chest radiography as a second reader.



# Enhanced Operation

## *S-Share*<sup>TM</sup> \*

S-Share<sup>TM</sup> can dramatically increase efficiency through the use of AccE Detector with various existing compatible equipment. It enables accelerating connection for better synergy with prestige digital radiography systems.

\* The S-Share of S4343-AW and S4335-AW, S4335-AWV is available only for AccE GC85A, AccE GM85, and GR40CW.





# Secure Your Care

## Samsung Healthcare Cybersecurity

- **Intrusion Prevention**

Tools for protecting against cyber threats from external attacks

- **Access Control**

Strengthened surveillance for tracking the access of patient information

- **Data Protection**

Encryption functions for safeguarding data whether at-rest or in-transit

Алматы (7273)495-231  
Ангарск (3955)60-70-56  
Архангельск (8182)63-90-72  
Астрахань (8512)99-46-04  
Барнаул (3852)73-04-60  
Белгород (4722)40-23-64  
Благовещенск (4162)22-76-07  
Брянск (4832)59-03-52  
Владивосток (423)249-28-31  
Владикавказ (8672)28-90-48  
Владимир (4922) 49-43-18  
Волгоград (844)278-03-48  
Вологда (8172)26-41-59  
Воронеж (473)204-51-73  
Екатеринбург (343)384-55-89

Ижевск (3412)26-03-58  
Иваново (4932)77-34-06  
Иркутск (395)279-98-46  
Казань (843)206-01-48  
Калининград (4012)72-03-81  
Калуга (4842)92-23-67  
Кемерово (3842)65-04-62  
Киров (8332)68-02-04  
Коломна (4966)23-41-49  
Кострома (4942)77-07-48  
Краснодар (861)203-40-90  
Красноярск (391)204-63-61  
Курск (4712)77-13-04  
Курган (3522)50-90-47  
Липецк (4742)52-20-81

Киргизия (996)312-96-26-47

Магнитогорск (3519)55-03-13  
Москва (495)268-04-70  
Мурманск (8152)59-64-93  
Набережные Челны (8552)20-53-41  
Нижегород (831)429-08-12  
Новокузнецк (3843)20-46-81  
Ноябрьск (3496)41-32-12  
Новосибирск (383)227-86-73  
Ноябрьск (3496)41-32-12  
Омск (3812)21-46-40  
Орел (4862)44-53-42  
Оренбург (3532)37-68-04  
Пенза (8412)22-31-16  
Петрозаводск (8142)55-98-37  
Псков (8112)59-10-37

Россия (495)268-04-70

Пермь (342)205-81-47  
Ростов-на-Дону (863)308-18-15  
Рязань (4912)46-61-64  
Самара (846)206-03-16  
Саранск (8342)22-96-24  
Санкт-Петербург (812)309-46-40  
Саратов (845)249-38-78  
Севастополь (8692)22-31-93  
Симферополь (3652)67-13-56  
Смоленск (4812)29-41-54  
Сочи (862)225-72-31  
Ставрополь (8652)20-65-13  
Сыктывкар (8212)25-95-17  
Сургут (3462)77-98-35  
Тамбов (4752)50-40-97

Казахстан (772)734-952-31

Тверь (4822)63-31-35  
Тольятти (8482)63-91-07  
Томск (3822)98-41-53  
Тула (4872)33-79-87  
Тюмень (3452)66-21-18  
Улан-Удэ (3012)59-97-51  
Ульяновск (8422)24-23-59  
Уфа (347)229-48-12  
Хабаровск (4212)92-98-04  
Чебоксары (8352)28-53-07  
Челябинск (351)202-03-61  
Череповец (8202)49-02-64  
Чита (3022)38-34-83  
Якутск (4112)23-90-97  
Ярославль (4852)69-52-93

<https://samsungmedison.nt-rt.ru> || [soe@nt-rt.ru](mailto:soe@nt-rt.ru)